

SMOOTHLINE SUSPENSION COLOR FINISH CHART

PROJECT _____
 TYPE _____
 NOTES _____
 QUANTITY _____
 DATE _____

Sparkling Silver - 01



Black Velvet - 02



Crystal White - 03



Creamy - 04



Hampton Bay - 05



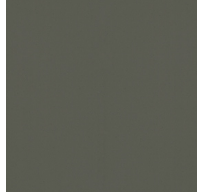
Lagoon - 06



Urban Forest - 07



In the Army - 08



Rusty Angel - 09



Rusty Rush - 10



Milk and Chocolate - 11



Fade to Gray - 12



Mysterious Gray - 13



Twilight - 14



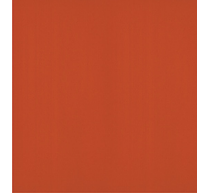
Lost Dream - 15



Purple Sky - 16



Fresh Oh - 17



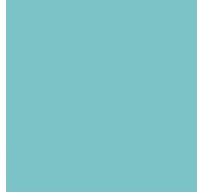
Funky P. - 18



Kissing Aphrodite - 19



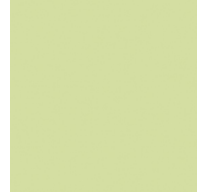
Poseidon's Paradise - 20



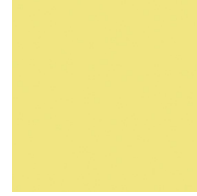
Blue Sky - 21



Spring Green - 22



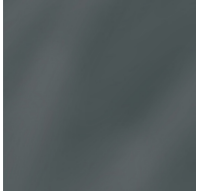
Mellow Yellow - 23



Golden Heart - 24



Gun Metal - 25



Champagne Cream - 26



Copper Mine - 27



Ancient Bronze - 28



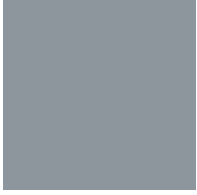
Jazz Gold - 29



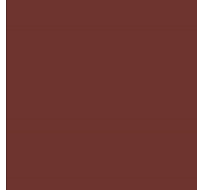
Olive Breeze - 30



Moonlight Silver - 31



Rosewood Red - 32



Digital: Not all screens are calibrated the same, and therefore, colors will appear differently between screens.

Physical: When texture is involved, there will be variations in color, character and tone within a product line and between product families.

Gun Metal: No Gun Metal finish is alike. It combines a mixture of transparent and black color particles which ensures a highly individual effect and no luminaire being identical.

Champagne Cream, Copper Mine, Ancient Bronze, Jazz Gold, these finishes have slight fading from specific powder coating production. Each luminaire will slightly vary. Available for International specifications by adding 'INT' at the end of the existing Model #. For assistance on 'custom' specifications, contact zteam@zaneen.com. In a constant effort to supply the best product, we reserve the right to change specifications or materials without notice. The most recent specification sheets are found at zaneen.com